



It only takes a THUMB to dominate them all!

Thank you for choosing Gunworks!

This THUMB muzzle devices is a precision manufactured tool to bias the muzzle oscillation during single or rapid fire of your rifle. It lead to faster follow up shots and has been designed and manufactured to fulfill or exceed the highest possible standards.

Installation

Gunworks recommends the installation by a gunsmith! GUNWORKS is not responsible for any damages caused by non experienced / non skilled persons.

Safety precautions before installation:

- **Be sure the weapon is unloaded – double check!**
- **Be sure to mount your muzzle device according to your caliber and assure that the bullet diameter is smaller than the diameter of the muzzle device**
- **Products with the suffix 556 (TwistFORK556, BirdCAGE556, VAULT556) are desigend for a use on . 223 Remington caliber rifles)**
- **Products with the suffix 762 (VAULT762) are desigend for .308 Winchester caliber rifles**

• **Required tools:**

- **bench vise**
- **upper receiver vice block or delrin (or similar) covers for chuck jaws**
- **19mm or 3/4" or 22mm bzw. 7/8" wrench**
- **cleaning compound like Acetone**
- **Spray Oil (like WD40 or Brunox,...)**

- **Mount the gun respective the upper receiver into a vise in order to attain adequate stability of the barrel during torque. Ensure that the chuck jaws are covered to avoid any damage to the gun. Only hand tighten the vise and be careful not to damage your gun.**
- **Remove the existing muzzle device like flash hider and crush washer and clean the threading with Acetone.**
- **Check the existing muzzle thread of your rifle and ensure that the THUMB device you purchased provides the corresponding threading.**

THUMB devices are available in following threadings:

- **1/2-28 UNEF**
- **5/8-24 UNEF**
- **M14x1, M15x1**
- **M18x1**

- **Spray some Oil on the muzzle threading as well as on the THUMB**
- **Install the Crush Washer provided together with the THUMB muzzle device; the small end of the crush washer points towards the gun, large end towards the THUMB muzzle device (see Fig. 1)**



It only takes a THUMB to dominate them all!

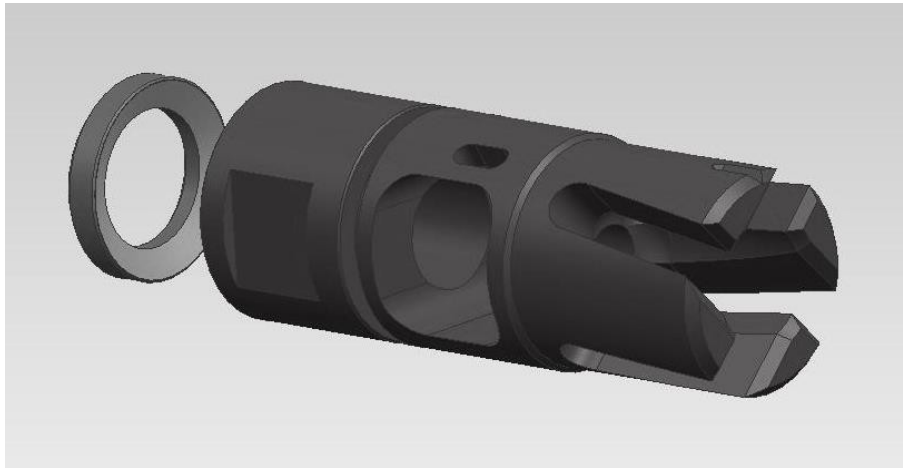


Fig. 1: Orientation of the THUMB and Crush Washer

- **Hand tighten the THUMB muzzle device**
- **You can continue the alignment to 12 o'clock if the alignment groove indexes app. At 11 o'clock by using a 19mm (3/4") wrench if you are installing a THUMB556 or a 22mm (7/8") wrench if you are installing a THUMB762 muzzle device**
- **Do not exceed an alignment of 45° in one step, modify the crush washer with sandpaper if further adaption of 45° is needed**
- **You will see that the alignment groove will come closer to 12 o'clock step by step**
- **In both cases the THUMB alignment groove should end exactly at 12:00 (see Fig. 1)**
- **Please notice, that installation and usage of our products requires strict attention of weapon expertise fundamentals. Our customers are urged to follow these fundamentals carefully**
- **It is necessary to zero-in the weapon after the installation of our products**

<p>In case of a missing stamp here, send the THUMB back to us!</p>	
--	--